


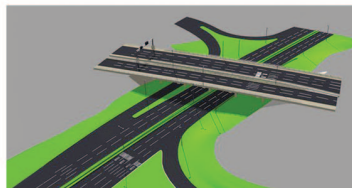
# Lynx Camera

## Summary Specification Sheet

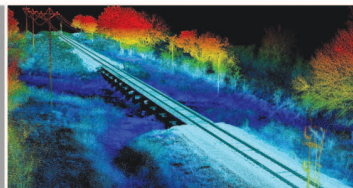


Lynx Imaging Camera

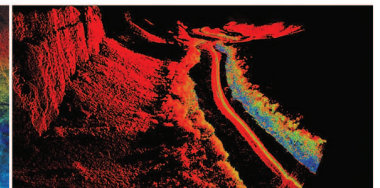
 The Lynx Mobile Mapper™ offers timestamped and calibrated passive-imaging cameras that are fully integrated. Up to four cameras can be integrated with each Lynx system.



 Road



 Rail



 Water



# Lynx Camera

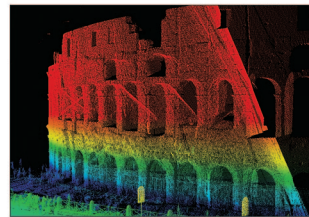
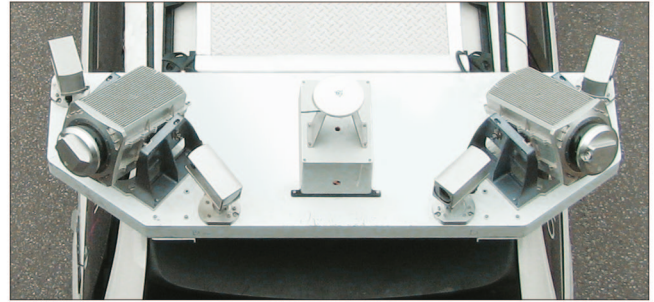
## The Lynx Camera Advantage

### Camera and point-cloud data

Cameras complement and enhance the lidar point cloud data by providing co-located, simultaneous and georeferenced imaging of the scene surveyed by the sensors. Sensor fusion and a multi-sensor system add value to the lidar data at a minimal financial and operational cost.

Although cameras are optional, most Lynx clients place a high priority on acquiring camera data in tandem with spatial data, as quickly as possible and with minimal disruption to their surroundings.

The camera configuration and mounting points are both flexible. Lynx clients can choose either a 2-MP or a 5-MP camera in a custom environmentally isolated protective enclosure.



Parameter	2-Megapixel Camera CB-200 GE	5-Megapixel Camera BB-500 GE
Lens, standard	F1.8/4.8 mm lens	F1.4/8 mm lens
Shutter speed (electronic)	Up to 5 frames/second	Up to 3 frames/second
Image resolution, (h) horizontal (v) vertical	Up to 1624 x 1236, scalable	2456 x 2058, scalable
Field of view	Horizontal 73°, vertical 59°	Horizontal 57°, vertical 47°
CCD/chip dimension	1/1.8" Bayer mosaic color progressive scan	2/3" Bayer mosaic color progressive scan
Pixel size	4.4-µm square pixels	3.45-µm square pixels
Weight	125 g	200 g
Dimensions (H x W x L)	29 x 44 x 75 (mm)	55 x 55 x 55 (mm)
Lens mount	C-mount	C-mount
Power	12 VDC	12 VDC
Shock	70 G	70 G
Vibration	10 G (20 Hz to 200 Hz)	10 G (20 Hz to 200 Hz)
Operating temperature	-5°C to +45°C <sup>1</sup>	-5°C to +45°C <sup>1</sup>
Storage temperature/humidity	-25°C to +60°C; 20-90%	-25°C to +60°C; 20-90%
Humidity	0 – 95% non-condensing	

1 Extreme temperature option available.

### Optech Incorporated

300 Interchange Way, Vaughan ON, Canada L4K 5Z8  
 Tel: +1 905 660 0808 Fax: +1 905 660 0829  
[www.optech.ca](http://www.optech.ca)

© Optech Incorporated. E&OE. Information subject to change without notice. Printed in Canada. 110711

