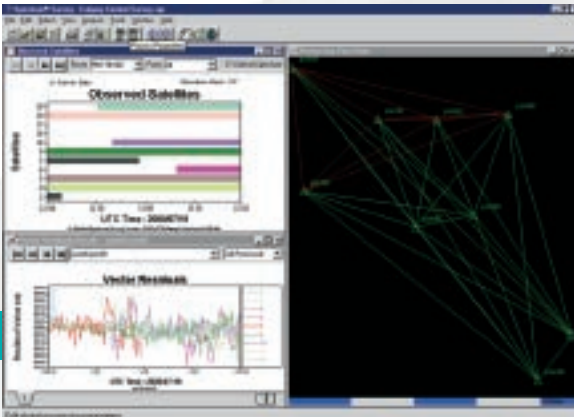




# Spectrum Survey

Post-processing, Adjustment  
and Planning Software

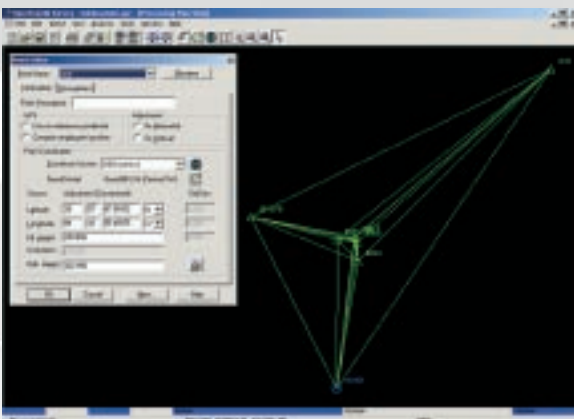
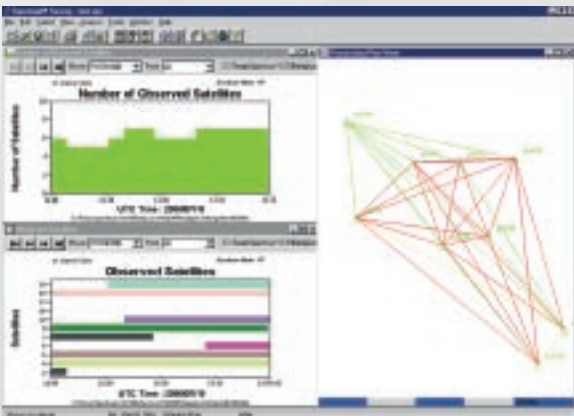
## Spectrum Survey



Sokkia's Spectrum Survey is a comprehensive, easy-to-use Windows®-based software package that supports all phases of GPS/survey operations. Spectrum Survey Suite combines Spectrum Survey, Planning and ProLINK® into one software package. This package provides all of the tools you need to successfully manage your project, from planning and processing, to adjusting and analyzing GPS survey data. Spectrum Survey is the link between you and any job.

## Benefits

- Supports commonly used methods of survey data collection, including static, rapid-static, kinematic and stop-and-go.
- Compatible with Sokkia GPS receivers, such as Radian, Radian IS and Stratus, and supports proprietary data formats, such as Ashtech u/b/e/s and Trimble \*.dat files.
- An integrated GPS data processing and network adjustment environment makes it easy to process and adjust data in a few simple steps.
- Display data in geographic, state plane, UTM or user-defined coordinates. Compute and export data in ground coordinates.
- View and edit baselines before processing either through menus or through the graphical interface.



# Spectrum Survey Specifications

## Planning

Mission Planning	Set up GPS receiver parameters in the office and know ahead of time how many satellites are visible at what time of day
Detailed Geographic Information	Software is pre-configured with thousands of cities, detailed coastlines and political and geographical boundaries
Compatibility	Communicate with a wide range of Sokkia GPS receivers, including Radian, Radian IS and Stratus

## Spectrum Survey

Graphic Display	View all points and vectors graphically and edit/select data through the graphical interface
Streamlined Workflow	Simplified processes, such as the project creation wizard, and the ability process and adjust data in one integrated product
Flexible	Process several methods of data collection, including static and kinematic simultaneously
Adjustment Tools	Adjust and analyze data using several tools, including a loop closure utility and a redundant vector check
Export Data	Export data to an SDR device, or to ProLINK to customize your report

## Minimum Hardware Specifications

Operating System	Microsoft Windows 9x, Windows NT, Windows 2000 and Windows ME
Processor	486 66 MHz microprocessor
Display	VGA Display
Memory	16 MB RAM memory
Ports	1 Serial Port and 1 Parallel Port
Drives	CD-ROM Drive Required
Security	Sokkia hardware security device

## Recommended Hardware Specifications

Operating System	Microsoft Windows® 9x, Windows NT, or Windows 2000
Processor	Pentium III 600 MHz Microprocessor
Display	SVGA display (17 in. or larger)
Memory1	128 MB RAM memory
Ports	1 Serial Port and 1 Parallel Port
Drives	CD-ROM Drive Required
Security	Sokkia hardware security device

Representante en Bolivia:  
**MERTIND LTDA.**

**Santa Cruz-Bolivia (central)**  
Calle Libertad # 657  
mertind@roble.scz.entelnet.bo  
ventas@mertind.com  
soporte@mertind.com  
Telf: (03) 3367676  
Fax: (03) 3336644

**La Paz-Bolivia (sucursal)**  
Av. Mariscal Santa Cruz Edificio La  
Primera, Bloque "B" Piso 7, Of. 5  
sucursal-lapaz@mertind.com  
Teléfono Of. (591-2)2-12-1444  
Fax: (591-2)2-12-1443

