

# Spectrum Survey Field 8

Data Collector Software



**SOKKIA**

# Field controller software with a superior gra

## See everything clearer.

Of the many features in the new SSF 8, the large graphical user interface (GUI) is one of the best. With the big icons you can point and touch with your finger, instead of using a stylus.

## Survey with speed and convenience.

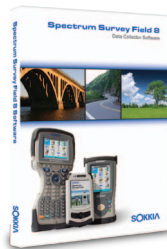
Create, edit, upload, and download faster using advanced data management techniques. How many instruments do you use on the jobsite? To simplify your work, Sokkia stores configuration files for each instrument. Switching from a SRX to a Series 50RX is a snap—there's no wasted time configuring baud rates and connection settings. Just do it once and store it. Compatibility problems? We know there are several programs that require specific file formats, so we've given SSF 8 numerous file formatting export options.

## Experience the Sokkia edge.

All of our data collection software, instruments and office software come with superior data exchange methods, making data management easier.

## SSF 8 Packaging

SSF 8 ships in the convenient double CD case complete with Installation Software, User Manual and Reference Manual. Authorization of SSF 8 is with activation codes. Contact your local dealer to license your free demo copy into a full working version.



## Communications Made Simple

The new Connections function allows for faster equipment connections, configuration switching, and access to Network RTK mountpoints.

## Real-Time Field-to-Finish

Make a code, or code and string, edit and see the map update in real-time as we store points.

## Real-Time Roads™

Real-Time Roads™ now allows reporting to multiple segment points and auto-switches to Slope staking when walking in the design slope area.

## Real-Time Anytime

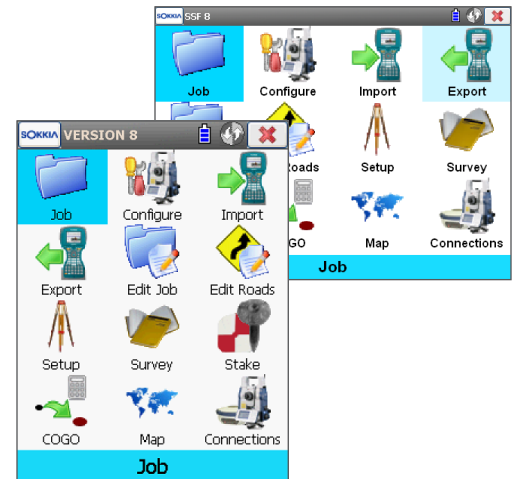
All alignment-based staking routines allow for Real-Time mode through the context menu and allows the user to avoid setting the station to stake. Instead, the current prism or antenna position is the design station in Real-Time.

## Design References

When staking out a road, SSF 8 allows the user to graphically select up to 50 additional surface or segment point references. Each reference is report to the stakeout store point screen, and the current stake report.

**The way is clear: simplify surveying with SSF 8.**

## Portrait and Landscape Devices Supported



## Intuitive User Interface

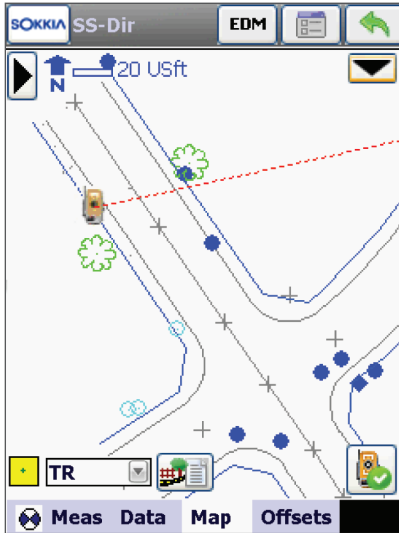
SSF 8 maintains the familiar large icon menu structure for fast and easy touch navigation. Select a function with the touch of a finger, or use the arrow keys to move the blue selection box around the screen.



# Graphical user interface and fast performance.

## MAP-based Topography

SSF 8 provides a superior MAP view in Topo that allows the user to measure and code while showing their current position in real-time.

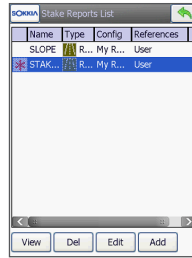
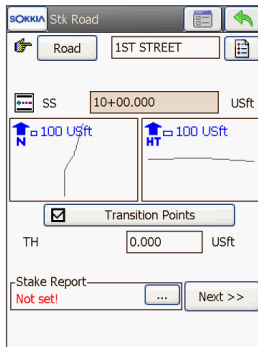


## More Viewable MAP Area

By adding collapsible toolbars for status, robotic icons, and zoom icons, the SSF 8 map provides more viewable area.

## Stakeout Transition Points

The opening dialog of the Road and Slope stakeout routines now offers options for stopping at various Transition Points along the design, for both horizontal and vertical critical stations.



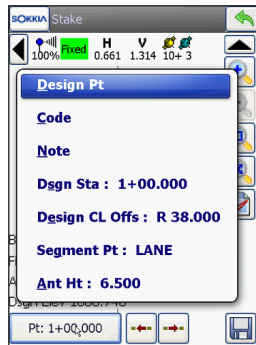
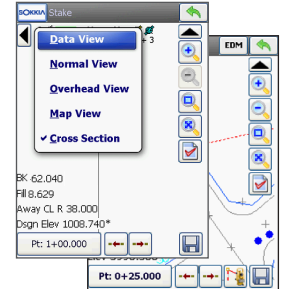
## Current Stake Report

The opening dialog of every stakeout routine now displays the current Stake Report.

## User-defined Stakeout Interface

Stakeout now supports up to five different views for the graphical information that is displayed.

Additional customization can be done through user-defined data labels. Simply click on the data label to select from the data label options list.



## Stake Reports

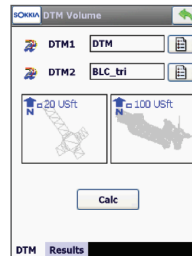
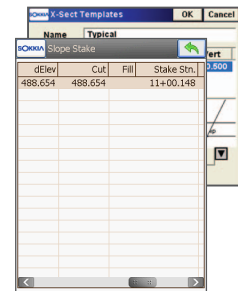
SSF 8 has industry leading user-defined stake reports. Unlimited configurations and reports can be stored, and up to 5 current reports can be active based on the routines you use.

## Sokkia Logo Context Menu

Get access to several features through the Sokkia logo button. This context menu allows the user to quickly Set References in road staking routines, or View Report in every stakeout routine.

## Your Stake Report Format

The stakeout report viewer and store point dialog display the information that you configure in the Stake Report Configuration.

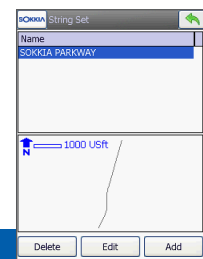


## Two Surface Volumes

SSF 8 allows the user to store a measured surface while staking a DTM, and provides the ability to calculate two surface volumes in COGO.

## Road Strings

Road Strings and the ability to define String Sets that define the true road design surface sets SSF 8 apart from products limited to cross section road staking.



## SSF 8 Complete - The Total Package

If you want all the features SSF 8 has to offer then SSF Complete is the package for you. With all the core features of SSF Basic plus the advanced features included in the GPS+, Robotics and Pro (Roding) modules, surveying and data collection versatility is at your fingertips.

## Total Solution - Maximize the use of SSF 8 with a Sokkia Data Collector

### SHC2500

- 624 MHz Xscale processor
- 5.17 megapixel camera and bar code reader
- 256MB RAM, 2GB ROM
- Built-in wireless connectivity
- 55 key alphanumeric keyboard, plus joystick
- Accessible, rechargeable and hot swappable batteries



### SHC250

- 806 MHz CPU
- 3.7 in. VGA color display
- 256MB SDRAM
- Built-in wireless connectivity
- Windows Mobile® 6.5
- IP66 dust/water protection



### SHC25

- 533 MHz CPU
- Windows Mobile® 6.5
- 256MB SDRAM
- 2GB flash memory
- Built-in wireless connectivity
- Field-replaceable Li-ion battery
- MIL-STD-810G Ruggedness



## SSF 8 Recommended System Requirements

Operating System -	Windows CE 5.0, Windows Mobile 6.1 or higher
Graphics -	320 x 240 minimum resolution W/H in pixels, 640 x 480 alt resolution
RAM -	128 MB minimum
Disk Space -	64 MB minimum free space, flash (internal) type

**Spectrum Survey Field Basic** - Core package comes standard with the following features:

Job	Edit Job	COGO (Coordinate Geometry)
New Job	Points in the Job	Inverse - Point to Point
Open Job	Descriptor Codes in the Job	Inverse - Point to Line
Delete Job	Layers	Inverse - Point to List
Job Information	Linework	Point in Direction
<b>Configure</b>	Area	Intersection
Survey Configurations (TS & DGPS)	Point Lists	Calculator
Coordinate Systems	Raw Data	Curves - Curve Solver
Global Settings	Images	Curves - 3 Point Curve
Backup Options	Stake Reports	Curves - Pi & Tangent
Distance Units	<b>Survey / Collect Features</b>	Curves - Radius & Points
Display Options	Topographic Observation	Area - By Points
Alarms	Tape Dimension Measurements	Area - Hinge
Menu Display Options	Missing Line	Area - Line
New Job Creation Options	<b>Stakeout / Navigate Features</b>	Corner Angle
Global Code Options	Points	Line Offset
Stake Report Configurations	Lines	Curve and Offset
<b>Import</b>	Offsets - Lines	Adjust - Rotate
From Job	Offsets - Intersection	Adjust - Scale
From Device	Offsets - 3 Point Curve	Adjust - Translate
From File	Offsets - Curve	Adjust - 2D Transform
<b>Export</b>	Offsets - Spiral	Adjust - Traverse
To Job	Digital Terrain Model	Traverse
To Device	Point in Direction	DTM Volumes
To File	Point List	
<b>Setup (Total Station)</b>	Curve	
Occupation / Backsight Setup	Linework	
Resection		
Remote Benchmark		

## Advanced Modules for GPS+ and Robotics

Add-on one of the following modules for these additional features:

### SSF GPS+ Module

Configure
Survey Configurations (GPS)
<b>Setup (GPS)</b>
Start Base
Localization
Status
Known Point Initialization
<b>Survey / Collect Features</b>
Auto-Topo

### SSF Robotics Module

Configure
Survey Configurations (RTS)
<b>Setup (Total Station)</b>
Remote Control
<b>Survey / Collect Features</b>
Auto-Topo
Monitor
Scanning



## Add SSF Pro Module (Roding) to Any Package

Contains the following additional features:

Edit Roads	Stakeout / Navigation Features
Road	Real Time Road
Horizontal Alignments	Road
Vertical Alignments	Slope
Templates	<b>COGO (Coordinate Geometry)</b>
Cross Sections	Road Offset
String Sets	
<b>Survey / Collect Features</b>	
Cross Section	
Find Station	

The Bluetooth® word mark and logos are registered trademarks of Bluetooth SIG, Inc. Windows is a registered trademark of Microsoft Corporation in the United States and other countries. Other trademarks and trade names are those of their respective owners. Product colors in this brochure may vary slightly from those of actual products owing to limitations of the printing process. Designs and specifications are subject to change without notice.