



# SOKKIA

**Layout Field & Layout Office**  
Complete Construction Layout Solution

# Accurately and quickly lay out construction

**Finally! Construction site software that gives you the power and performance you need, but is still easy to learn and use.**

## **Sokkia Layout Field Software**

Sokkia Layout field software is where the real work begins. Not only can you import projects that were prepared on the desktop, you can easily enter plan features from paper plans directly onsite. Sokkia Layout Field software can then be used to help you locate points on the construction site using modern equipment such as a total station. After construction you can perform as-built surveys and create setting-out tolerance reports.

## **Sokkia Layout Office Software**

Sokkia Layout Office software installs on any desktop PC. With it, you can prepare your stake out projects by importing CAD drawings produced by engineers and architects, or when no digital CAD drawings are available, you can manually input the data simply from paper plans. Easily coordinate objects, compute offset stakes and transfer the projects to Sokkia Layout Field software for setting-out.

**High-end features and simple operation, versatile and reliable, with Sokkia Layout you're ready for layout, no waiting...**

## **Works Seamlessly with Sokkia's Total Stations**

SRX Robotic Total Stations - The fully-robotic, fully-tracking and auto-pointing robotic total station.

SETX Total Stations - A rugged, high-performance total station incorporating the latest technology with traditional surveying functionality.

Series50RX Reflectorless Total Stations - Featuring enhanced environmental durability, increased measurement speed and expanded functionality.

## **Straight Forward Information, Displayed Simply and Clearly**

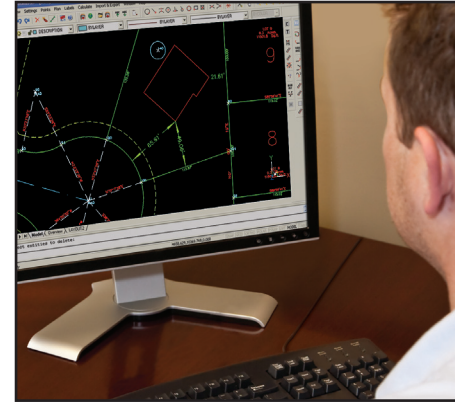
Sokkia Layout is the construction layout software designed for contractors by contractors. Even if you are new to layout, Sokkia Layout guides you through the steps necessary to complete restaking, topo, grade checking or as-built chores quickly, easily, and accurately.

## **Full Robotic Operation Available**

If you desire the highest in productivity in your construction layout applications, a robotic solution is the answer. A fully capable one-man solution, robotic construction staking and layout can provide a productivity advantage as much as 300% over mechanical total stations.

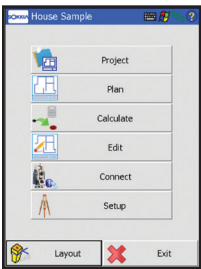
## **Flexible • Scalable • Expandable**

Whether you are looking to layout cable runs, building corners, or a pipeline, Sokkia Layout provides the flexibility and performance you demand with a simple, straight forward user interface.



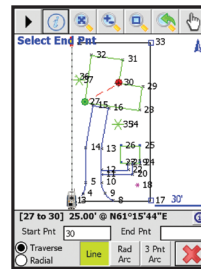
# n projects with a straight forward, easy-to-use interface.

Sokkia Layout was developed with one purpose in mind – give contractors the tools they need to accurately and quickly lay out construction projects. Sokkia Layout is a complete solution for construction professionals.



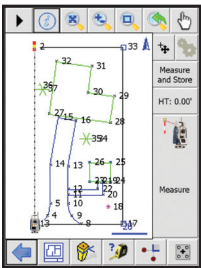
### Simple User Interface for Total Stations

- Drive robotic total stations with the optional robotic module.
- Turn measurements from total stations into graphical data.
- Zero Plate reduces the potential for angular mistakes.



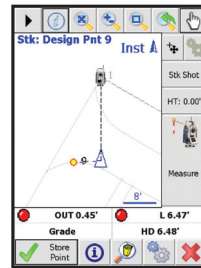
### Quick Dimensions

- Click the tape measure icon to quickly get the dimension between points.
- View the summary of multiple point selections.



### Live Map with Touch Selection

- Touch any point or line on the map and press the Stake button to layout the point.
- Touch any line to quickly calculate offsets.



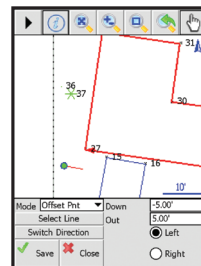
### Simple Offsets

- Offset line segments.
- Offset figures.
- Create offset points from lines.
- Calculate down and out from any line to a point.



### Fast Plan Entry

- Directional arrows for entering fast plan line jogs.
- Plans are stored as figures that can be sent out to DXF files.



### Bolt Patterns

- Store bolt patterns.
- Plot bolt patterns at any project point.

## Sokkia Layout Office Software

### Digital Plans Made Easy

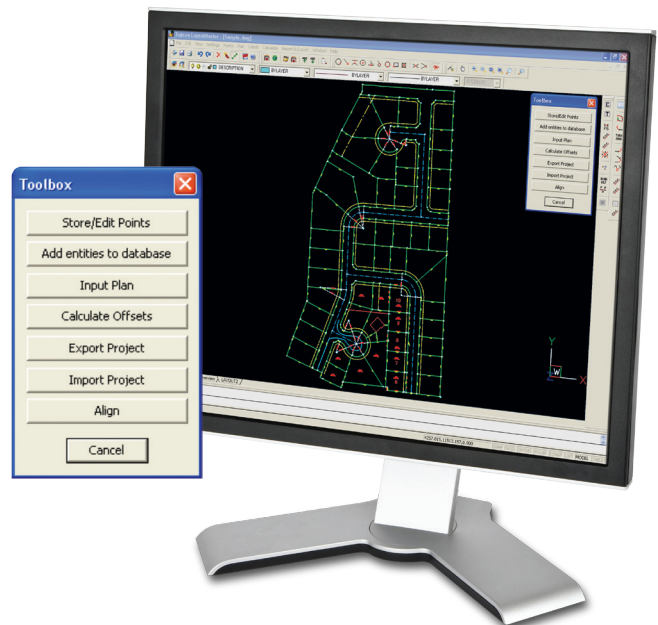
Quickly generate points and coordinates of setting-out points. Use the easy routines to generate a northing, easting, and elevation for each plan point.

### Building Calculations

Compute areas, points, and lines from objects and points. Calculate offset lines from known building dimensions or lot lines. Then simply transfer your job into a Sokkia Layout field controller.

### Import Computer Design Files

Prepare setting-out projects by importing AutoCAD DWG and DXF files directly into Layout Office. From design through build-out, Sokkia Layout provides all the positioning control tools you need.



## Recommended System Requirements

Sokkia Layout Field Software	
Operating System	Windows® CE 5.0, Windows Mobile 6 or higher
Graphics	320 x 240 minimum resolution W/H in pixels, 640 x 480 alt resolution
RAM	64 MB
Disk Space	Minimum 64 MB free, flash (internal) type

Sokkia Layout Office Software	
Operating System	Windows® XP/Vista
Processor Speed	500MHz or higher
RAM	512MB RAM
Connectivity	USB2 port for hardware lock

## Total Solution – Maximize the Use of Sokkia Layout with a Sokkia Data Collector

### SHC250

Compact, rugged, handheld, Windows Mobile 6.5 data collector

- Built-in Bluetooth® wireless technology and Wireless LAN
- 806MHz Processor
- 256MB DDR SDRAM, Flash Memory 1GB (NAND)
- Windows Mobile® 6.5 Operating System
- Easy access Compact Flash and SD Media card slots deliver memory expansion and connectivity options
- Removable Li-ion batteries
- Ultra-bright, TFT, color touch screen display

### SHC2500

A full-featured keyboard, rugged, handheld field controller packed with memory and built-in 5 megapixel camera

- Built-in Bluetooth wireless technology and Wireless LAN
- 624MHz XScale Processor
- 5.17 megapixel camera and bar code reader
- 256MB RAM, 2GB ROM
- Windows® CE.NET 5.0 operating system
- 55 key alphanumeric keyboard, plus joystick
- 8 way directional arrow and enter key
- Easy access USB flash drive
- Accessible, rechargeable and removable batteries

## Experience Sokkia technology.

All of our data collection software, instruments and office software come with superior data exchange methods, making data management easier.



Product names mentioned in this brochure are trademarks of their respective holders.  
The Bluetooth® word mark and logos are registered trademarks of Bluetooth SIG, Inc.  
Product colors in this brochure may vary slightly from those of actual products owing to limitations of the printing process.  
Designs and specifications are subject to change without notice.

[www.sokkia.co.jp](http://www.sokkia.co.jp)

75-1, HASUNUMA-CHO, ITABASHI-KU, TOKYO, 174-8580 JAPAN