

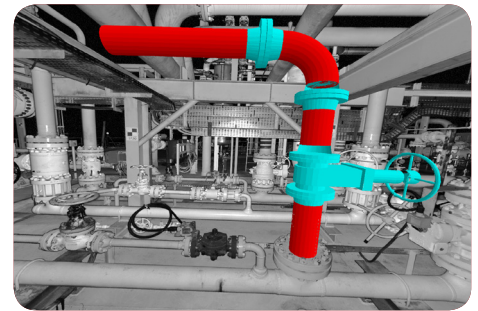
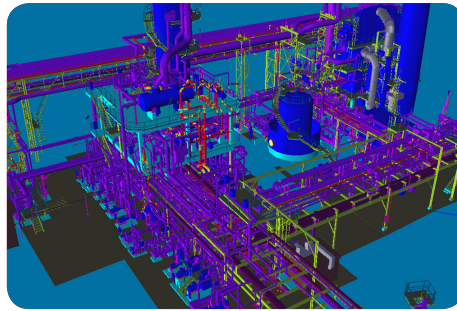
LFM Modeller 3.95 Released!

26th July 2010



Such is the power of modern CAD systems that virtually all Plant Engineering Tasks are now carried out with the aid of 3D CAD tools. For revamp projects, this reliance on CAD tools means that acquiring “as-built” models of existing plant is a key prerequisite. LFM Modeller enables a user to rapidly convert high definition scan data into Intelligent CAD models which are then exportable into a number of CAD systems.

Powerful tools such as *BubbleView™* Modelling were introduced in LFM Modeller 3.92, such features provide LFM customers with an unparalleled user experience. In accordance with our continual development policy, LFM Modeller 3.95 introduces further improvements that simplify the work processes and improve productivity for our customers.



Export as-designed

This feature resolves a long standing problem in that a plant, accurately captured and modelled by 3D laser scanner, will not be an ‘as-built’ ‘as-designed’ model. Pipes will not be exactly perpendicular, elbows not exactly 90°. LFM Modeller now allows the user to choose the status of the final model output. Either as a pure ‘as-built’ model, or as an ‘as-built’ ‘as-designed’ model.

The final model export can perform a correction which ensures the deliverable will be readily accepted by the target CAD package, with the required level of intelligence.

This will allow the production of deliverables such as isometric drawings. Other laser scanning software packages require their customers to correct 3D as-built models in their chosen CAD package. LFM Modeller applies this correction automatically for its customers.

Expanded Standards Library

A comprehensive standards library has now been further expanded.

Intelligent Export now Improved

As-built objects modelled in LFM Modeller 3.95 carry ‘more intelligence’ than some rival packages and now more closely resemble the final native CAD formats. The implications of this are that less intervention is required within CAD by the LFM customer before they are able to work with the data. The intelligent export of 3D models into CAD is therefore more seamless and robust than ever before.