

Void Scanner 150 Mk2

RUGGEDISED UNDERGROUND 3D LASER SCANNER



world leading laser measurement technology



MDL
Laser Systems

Void Scanner 150 Mk2

RUGGEDISED UNDERGROUND 3D LASER SCANNER

The VS150 is designed to operate in demanding underground mining environments and may be used to measure voids, stopes and rock faces in what are unsafe, or difficult to access areas.

The VS150 may be deployed conventionally using survey tripods or by remote control when deployed on rods, booms, masts, lifts and cranes.

The VS150 is small (overall width 140mm and length 503mm), lightweight (5.0kg) for easy transportation and extremely rugged.

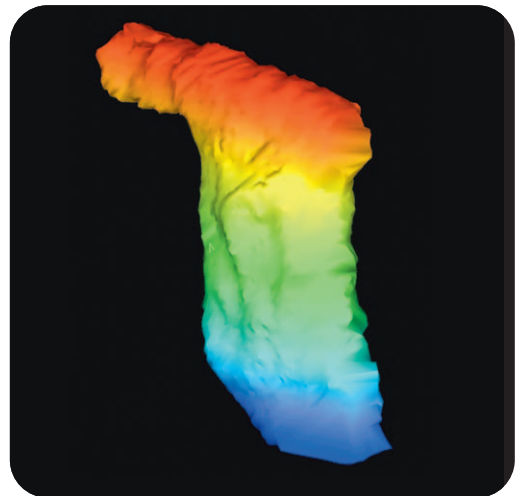
Simple to use, the dual axis motorised instrument scans 200 points per second and stores the data on rugged tablet PC or laptop computers.

The VS150 comes complete with MDL's software to display (in real time) laser point clouds in 3D.

Data may be exported into MDL's Voidworks for further processing, or to any CAD mine survey software package.

Key Features

- Pulse time of flight laser distance meter
- Visible red laser pointer for alignment
- Built in pitch and roll sensor
- Direct reading optical encoders (horizontal and vertical angles)
- RS232 data and control interface
- 12V DC operation (10.5V DC to 17V DC)



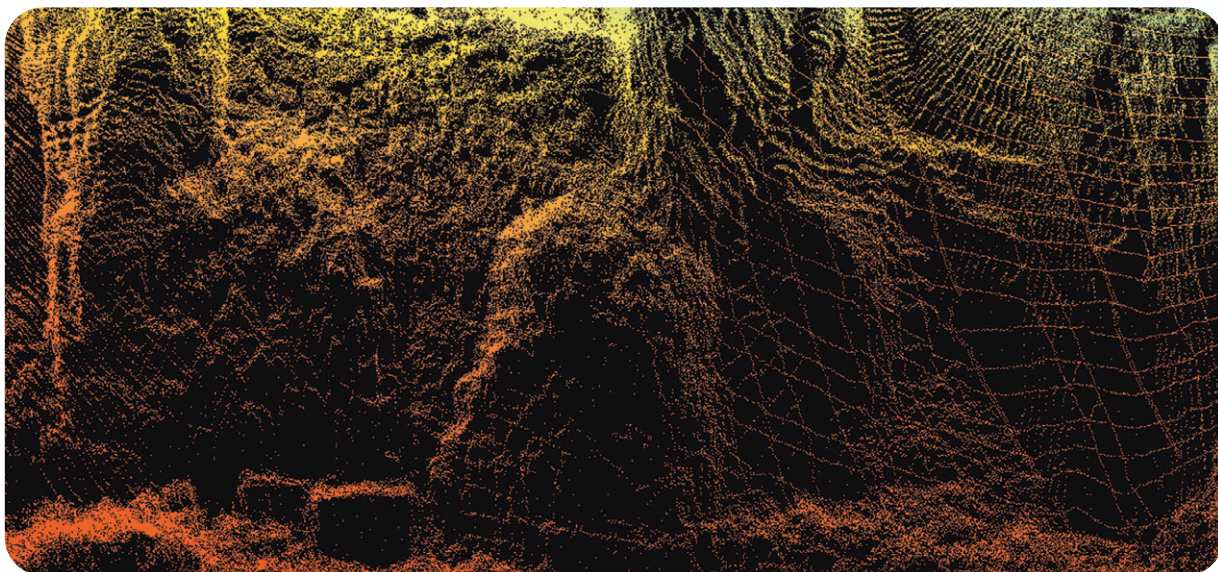
Stope scan



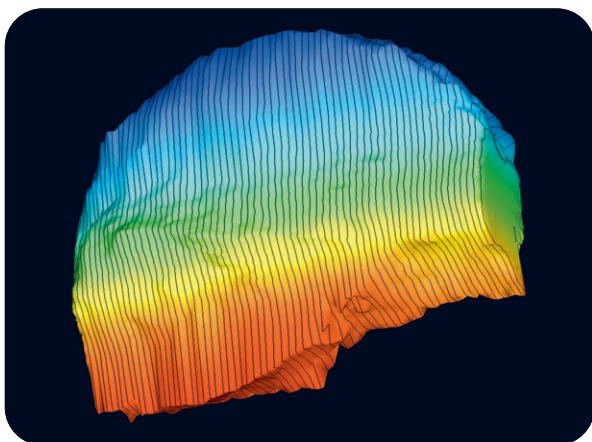
Safe and fast precision scanning of voids and cavities

Benefits

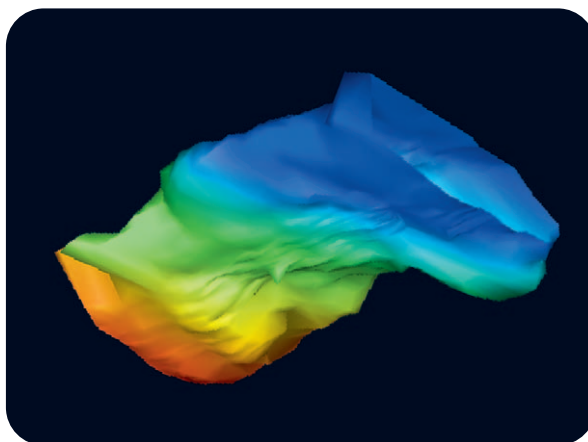
- Survey dangerous areas by remote control
- Fast accurate 'onsite' results
- 3D solution
- Direct angle measurement for accuracy
- Easy to use
- Highly portable
- Low cost of ownership
- Worldwide support



Pillar and retaining wall detail



Inaccessible void in a gold mine



Scan of disused mine

Technical Specifications

- 150m/500' passive range
- Class 2 eye safe laser (FDA/IEC)
- Accuracy typically 5cm/1.97"
- Range resolution 1cm/0.4"
- Scan rate 200 points per second
- Horizontal scan angle 360°
- Vertical scan angle 270°

Horizontal & Vertical Encoders

- Optical 360°
- Accuracy +/- 0.2°

Pitch & Roll Sensor

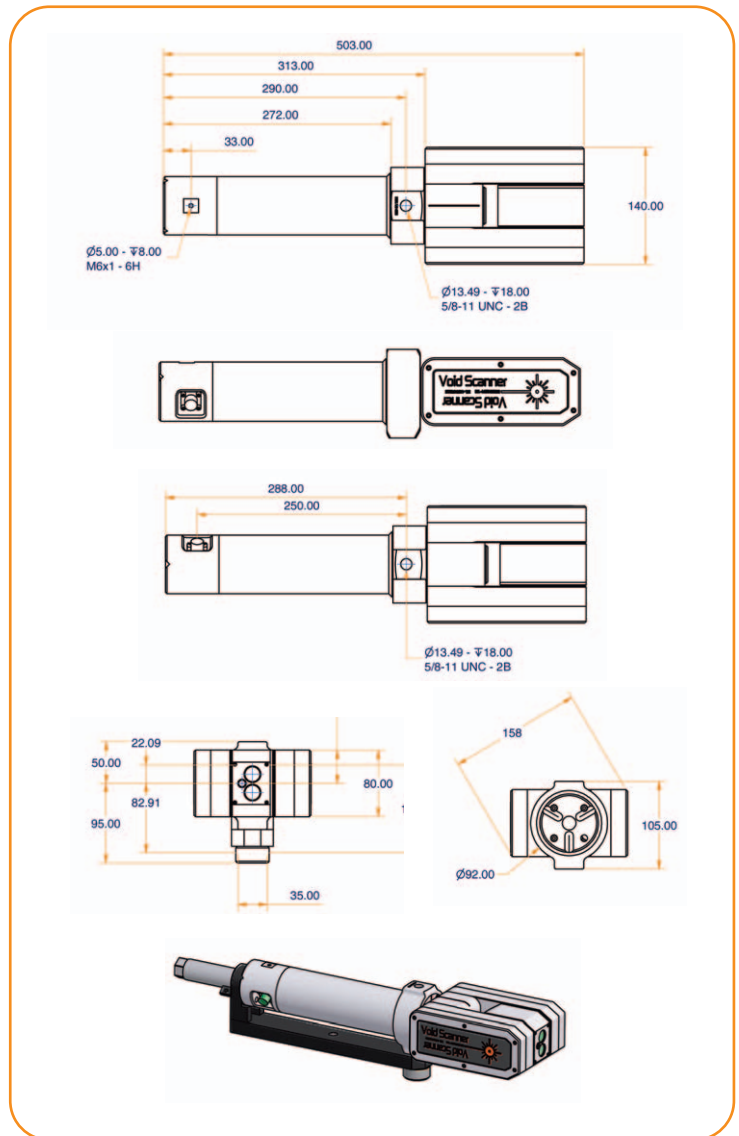
- Range 360°
- Accuracy +/- 0.2°

Environmental

- Operating temperature -10°C to 45°C/
14°F to 113°F
- Water & dust resistant IP65

Power and Dimensions

- Power: DC 12V (10.5V DC to 17V DC)
- Dimensions (WxDxL): 140 x 119.5 x 503mm
- Weight: 5.0kg/11lbs



For more information on the Void Scanner 150 Mk2:

Europe, Africa & Asia Sales Office

tel: +44 (0) 1904 791139 • fax: +44 (0) 1904 791532
email: sales@mdl.co.uk
web: www.mdl.co.uk

America's & South Africa Sales & Service Office

tel: +1 281 646 0050 • fax: +1 281 646 9565
email: info@mdl-laser.com
web: www.mdl-laser.com

Australia Sales & Service Office

tel: +61 3 9318 9666 • fax: +61 3 9318 9777
email: info@mdlaustralia.com.au
web: www.mdlaustralia.com.au

Europe, Africa & Asia Service Office

tel: +44 (0) 1224 246700 • fax: +44 (0) 1224 824987
email: service@mdl.co.uk
web: www.mdl.co.uk

Information contained is believed to be accurate. However, no responsibility is assumed for its use. Technical information is subject to change without notice.

9001/2000 Certified

