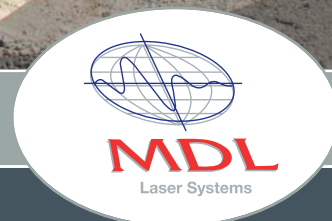


Cabled Boretrak[®]

MAGNETIC BOREHOLE DEVIATION SYSTEM



world leading laser measurement technology



Cabled Boretrak[®]

MAGNETIC BOREHOLE DEVIATION SYSTEM

MDL's Cabled Boretrak[®] is a cost effective borehole deviation surveying system, that has been designed to be compact, lightweight, and above all, highly portable.

MDL has designed the Cabled Boretrak[®] as a means of auditing the results of drilling activity quickly and accurately. Incorrect setting of drill angles, borehole wander and drilling to incorrect depths results in service problems, particularly in the mining, quarrying and construction industries.

The system features a rugged probe containing a dual axis tilt sensor and digital compass that calculates the borehole deviation from the collar position at fixed intervals. Data is transmitted to the surface via the heavy duty cable and recorded in the MDL CDU logger.

The CDU can be handheld or attached to the MDL lightweight tripod for ease of use.

The Boretrak[®] system is also supplied with a weighted extension piece that can be filled with lead shot or sand, to ballast the system for use in deep or flooded holes.

MDL's Boretrak[®] 3D software is used to process the data and produce a hard copy of the results. Holes can be displayed individually, or in any combination to determine hole separations.

The data can also be integrated into 3rd party software systems, including MDL's Face 3D software.

Applications

- Cast blasting
- Exploration drilling
- Foundation drilling
- Engineering works
- Quarry blasting
- Underground mining
- Pre-split blasting
- Dam pinning
- Piling

Benefits

- Improved technology therefore improved productivity
- Accurate borehole deviation therefore more accurate burden calculations
- More efficient blasting
- Better fragmentation
- Light and portable
- Simple to use
- Very little training required

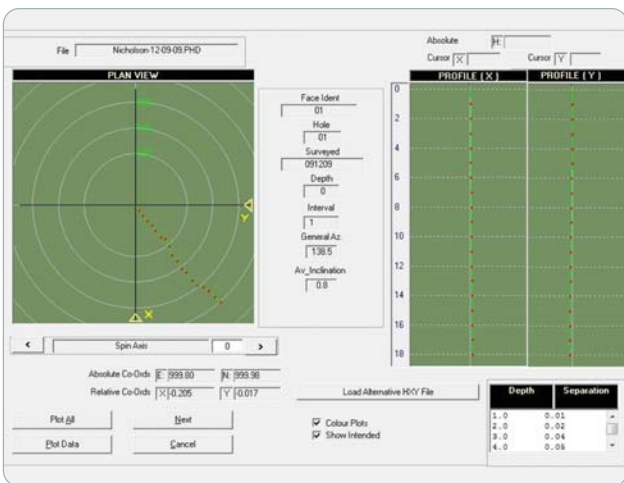




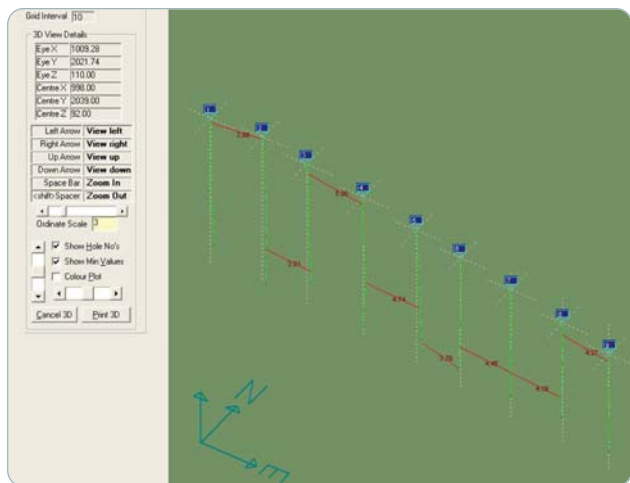
Cabled Boretrak® showing complete system including CDU logger



Cabled Boretrak® being lowered by hand into borehole



Boretrak® 3D front elevation, showing minimum and maximum separations



Boretrak® 3D software showing 3D image of all measured holes



Technical Specifications

- Weight of probe: 2.4Kg / 5.72lbs
- Dimensions of probe: 709mm L x 38mm Dia (18.90in L x 1.50in Dia)
- Weight of cable: 4.7g / 0.1lbs per metre
- Dimensions of CDU: 208mm x 110mm x 48mm / 8.19in x 4.33in x 1.89in

Sensor: Dual Axis

- Inclinometer: Range: +/- 40° (from vertical)
Accuracy: 0.2°
Resolution: 0.01°
- Compass Range: 0 - 360°
Accuracy: +/-1° typically when vertical
Resolution: 0.1°

For more information on Cabled Boretrak®:

Europe & Rest of World Sales Office

tel: +44 (0) 1904 791139 · fax: +44 (0) 1904 791532
email: sales@mdl.co.uk
web: www.mdl.co.uk

America's Sales & Service Office

tel: +1 281 646 0050 · fax: +1 281 646 9565
email: info@mdl-laser.com
web: www.mdl-laser.com

Europe & Rest of World Service Office

tel: +44 (0) 1224 246700 · fax: +44 (0) 1224 824987
email: service@mdl.co.uk
web: www.mdl.co.uk

CDU

- Graphics: 4 lines / 20 characters per line
- Memory: 8k
- Data download: RS232, selectable baud rate (1200 to 19200)
- Power: Rechargeable
- Size: 102mm W x 41mm H x 242mm L / (4.0in W x 1.6in H x 9.5in L)
- Weight: 800g / 28.2 oz

Environmental

- Probe: depth rated to 100m / 393.7in (flooded hole)
- CDU: IP66
- Operating temperature: -10°C to +45°C / 14°F to 113°F
- Storage temperature: -20°C to +50°C / -4°F to 122°F

Agent:



Information contained is believed to be accurate. However, no responsibility is assumed for its use. Technical information is subject to change without notice.

9001/2008 Certified

